

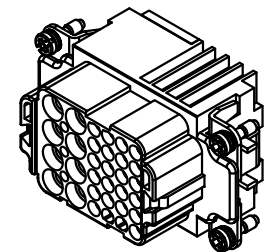
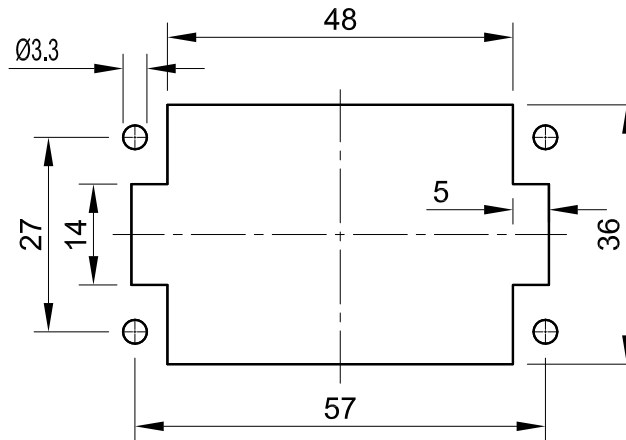
Technical data:


- No. of contact: 8
- Additional contacts: +24 signal contacts
- Termination method: Crimp termination
- Gender: Female
- Size: B10
- Conductor cross-section: 0.14 ... 4 mm²
- Rated current: 16A
- Rated voltage(conductor-earth): 230V
- Rated voltage(conductor-conductor): 400V
- Rated impulse voltage: 4kV
- Pollution degree: 3
- Rated current(signal): 10A
- Rated voltage(signal): 160V
- Rated impulse voltage(signal): 2.5kV
- Pollution degree(signal): 3
- Rated current acc. to UL: 16A
- Rated current acc. to UL(signal): 10A
- Rated voltage acc. to UL: 600V
- Rated voltage acc. to UL(signal): 600V
- Insulation resistance: $\geq 10^{10}\Omega$
- Contact resistance: $\leq 3m\Omega, \leq 1m\Omega$
- Limiting temperature: -40 ... +125°C
- Material(insert): Polycarbonate
- Color(insert): RAL 7032(pebble grey)
- Material(contacts): Copper alloy
- Mating cycles: ≥ 500
- Material flammability class acc. to UL94: V-0
- RoHS: Compliant
- Specifications: IEC61984, EN60664-1

技术数据:

- 针数: 8
- 额外插针: +24 信号端子
- 接线方式: 压接连接
- 公母类型: 母头
- 尺寸: B10
- 导体截面积: 0.14 ... 4 mm²
- 额定电流: 16A
- 额定电压(导体-接地): 230V
- 额定电压(导体-导体): 400V
- 额定脉冲电压: 4kV
- 污染等级: 3
- 额定电流(信号): 10A
- 额定电压(信号): 160V
- 额定脉冲电压(信号): 2.5kV
- 污染等级(信号): 3
- 额定电流符合UL: 16A
- 额定电流符合UL(信号): 10A
- 额定电压符合UL: 600V
- 额定电压符合UL(信号): 600V
- 绝缘阻抗: $\geq 10^{10}\Omega$
- 接触电阻: $\leq 3m\Omega, \leq 1m\Omega$
- 极限温度: -40 ... +125°C
- 材料(插芯): 聚碳酸酯
- 颜色(插芯): RAL 7032(卵石灰)
- 材料(插针): 铜合金
- 插拔次数: ≥ 500
- 材料阻燃性等级符合UL94: V-0
- RoHS: 符合豁免标准
- 规格: IEC61984, EN60664-1

Panel cut out
面板开孔尺寸



| | | | | | |
|--|--|---------------------------|--------------------------|---------------------------|--------------|
|  InKonn (Suzhou) Electric Technology Co., Ltd. | All Dimensions in mm Original Size DIN A4 | Date 2019-6-5 | Drawing No. TC0352166 | Rev. A00 | Scale 1:1 |
| | Part No. 10 37 032 2200 | Created by Shuxu Huang | Checked by Yiyi Luo | Type Name IK-008/24-CF | |